

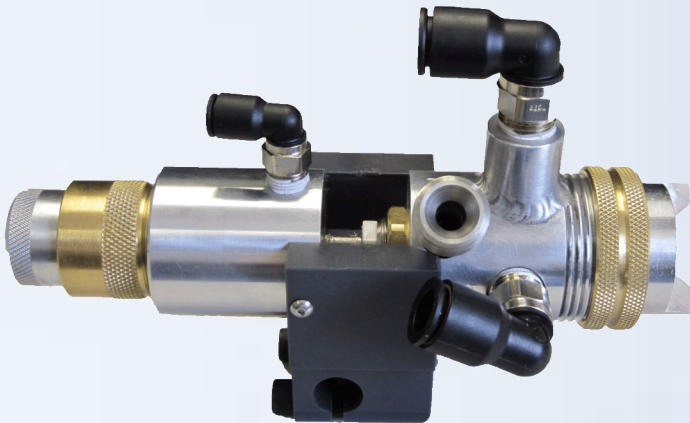
TURBO SPRAY

**World's largest manufacturer of
Innovative Spray Equipment**

www.TurboSpray.com

**Turbo Spray Midwest
Howell, MI
517.548.9096**

**Turbo Spray South
Atlanta, GA
770.888.2220**



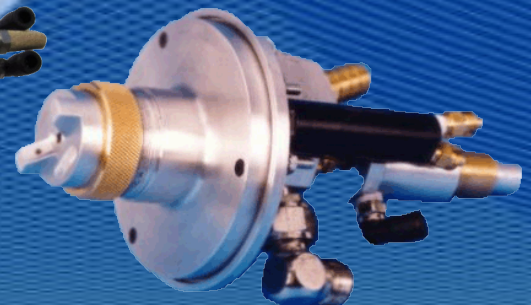
Automatic Guns

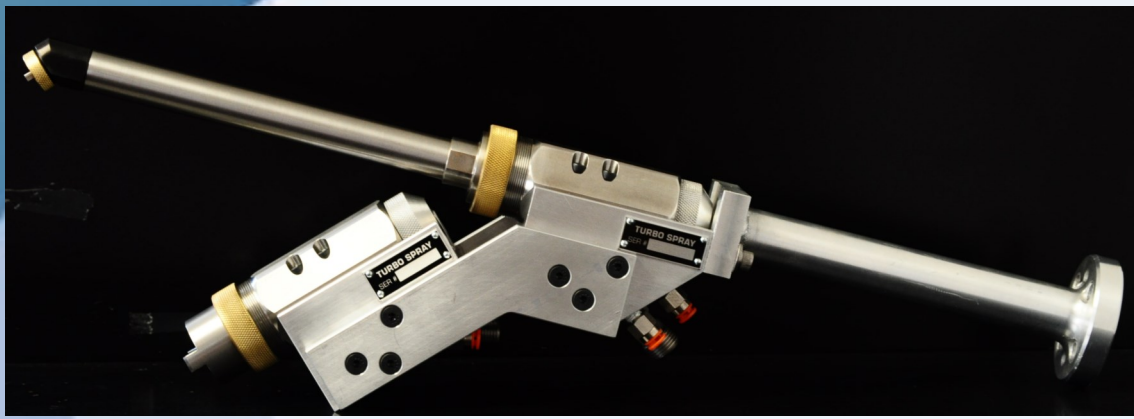


Hand Spray Guns

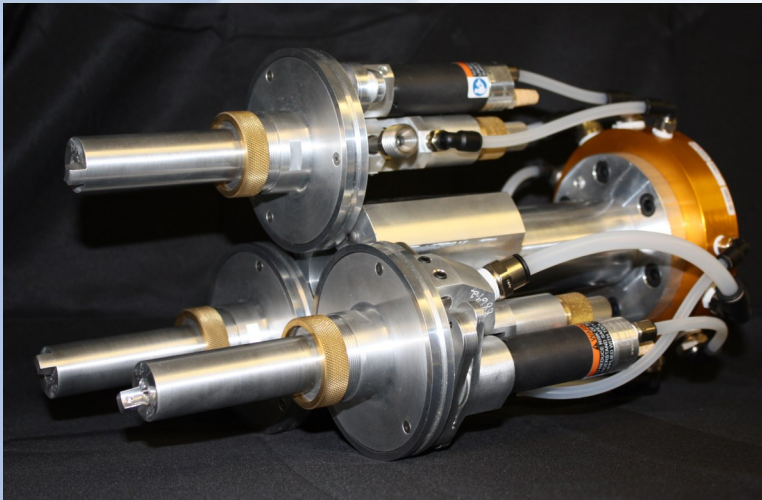


Rotary Guns





**Double spray gun on single manifold with robot bracket—handles—recesses—overall
Analog recess 45° extension with fan control
Regular manifold automatic gun with wider fan for overall**



**3 Small rotary spray guns on single bracket
with quick disconnect manifold—saves
color changes and waste**

Turbo Spray Guns

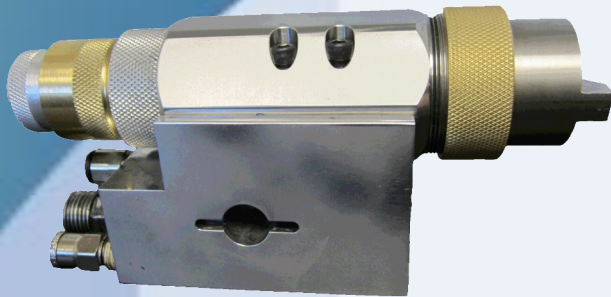
We are the industry leader in custom spray guns and finishing systems for paints, adhesives, mold releases, slip coats, CARC coatings and other liquid coatings. Our true low pressure guns waste less material, improve working conditions and give you more precision and transfer in your spray application. Our engineers design and machine our equipment to your specific application to improve your coating consistency and transfer efficiency.

Product Applications

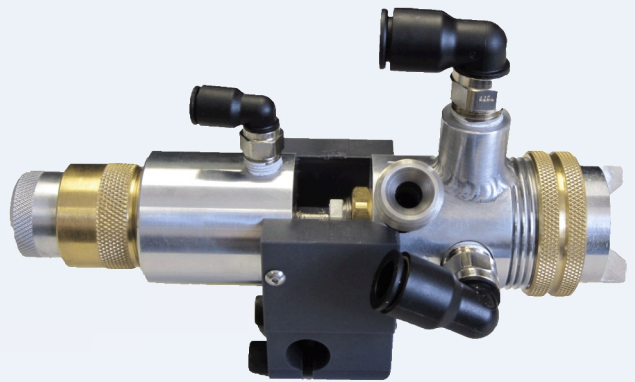
Turbo Spray serves a variety of industries requiring spray guns and spray gun systems for liquid application. However, our repeat customers generally fall into three broad ranges: Aeronautical paint applications, Automotive paint applications and all sorts of adhesive spray applications. This includes paint, slipcoat, mold release, aerospace coatings and rubber to metal adhesive applications.

Product Differentials

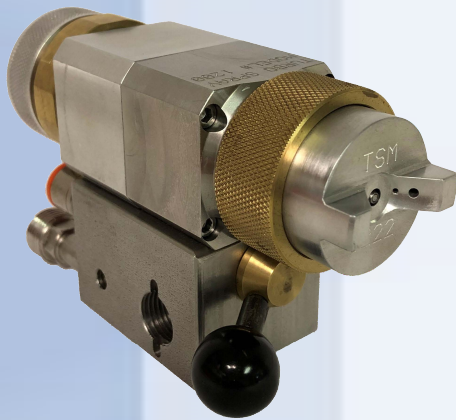
So what makes a Turbo Spray product unique? True low pressure systems! This is what Turbo Spray refers to as “true” HVLP” (high volume, low pressure). The ability to truly spray at pressures below 10 psi. Our custom made spray guns are designed to allow more air volume into the spray gun, this a major improvement over conventional HVLP.



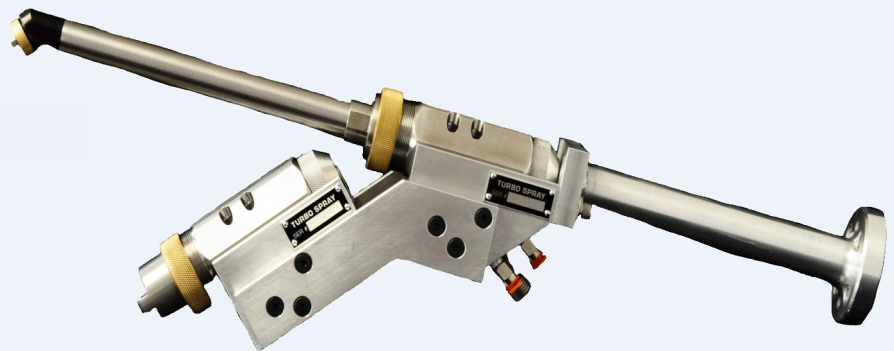
#1000 Automatic gun with manifold
 Manifold can be customized to any mounting application.
 Gun mounting is only 4 bolts



#300M Automatic gun
 Our top selling spray gun
 High volume, low pressure with manual fan control



#1200 Quick Release Manifold Gun
 Same "true" low atomizing pressure as always offered from our 300M series of spray guns



#9000ACH Dual Gun Assembly
 Dual gun set-up for robotic spraying
 Paints and mold release

Custom Air Caps and Extensions

Designed for your specific application



12°



45°

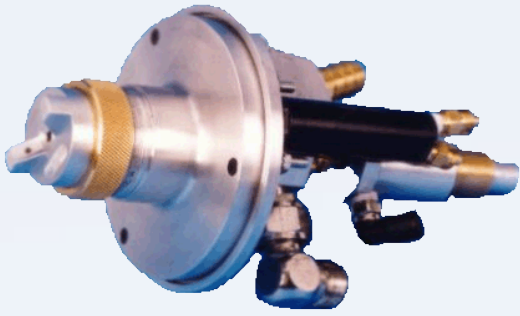


90°



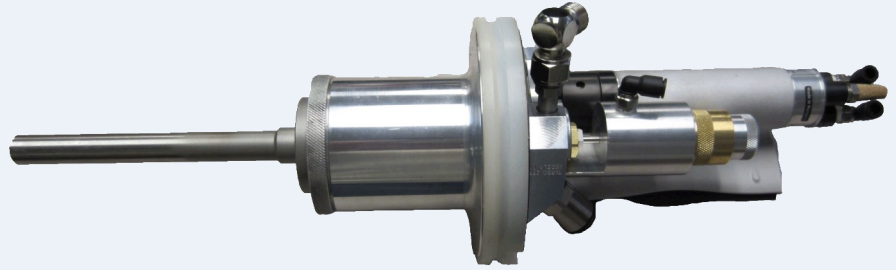
Customized for your process

Correct Atomizer Design → Maximum



#2001S Small Rotary Gun

Lightweight. Ideal for robotic spray applications in small areas



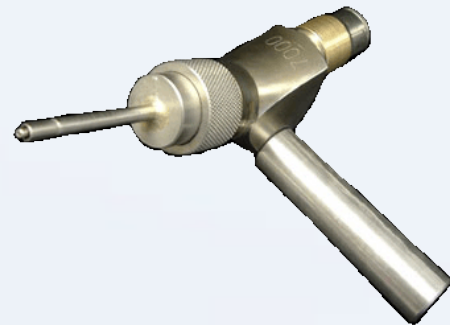
#2001 Large Rotary Gun

Capable of fan widths of 3" to 18"



#7000 Needle-less gun

Stainless steel needle-less atomizer.
Under 10 PSI.
Ideal for in-line spraying operations



#7000E Needle-less Striping gun

Extended air cap version of the #7000 gun
Precise spray pattern down to 1/8" width
for continuous spray



9.75" Long—1-1/8" Ø

#8000-Mini - Pipe sprayer

Small diameter automatic gun to spray the
inside of long pipes for the drilling industry



#8000 - Pipe sprayer

Automatic gun to spray the inside of long pipes for the drilling industry

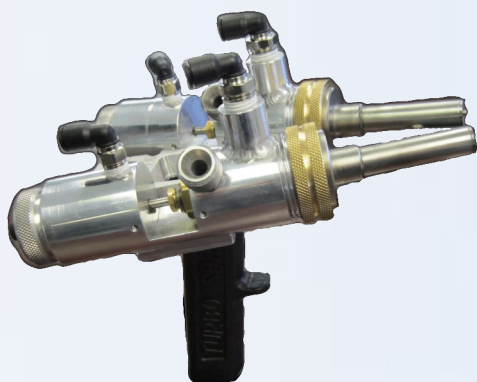
Transfer Efficiency → Lower Atomization



www.TurboSpray.com

True Low Pressure Spray Guns

Customized for Your
Specific Application



#300-2K—2 Component Exterior Mix Atomizing spray gun
Gun bracket adjustable for ergonomic hand spray or
robot spray—same gun
Ratios accurate to 20 Resin: 1 Catalyst



#840P-Cup
Gravity fed,
Lightweight cup
gun. Ideal for
small paint
production runs.
Under 10 psi



#840-P Hand Spray gun
Our most popular hand spray gun
Under 10 PSI, lightweight—20 ounces



#840PVA
Delivers a pre-programmed
quantity of fluid each time



#880 Hand Spray Cup gun
Lightweight, ergonomic, uses multiple air
caps for exact spray pattern required

g Air Pressure → Lower Coating Usage



1172 Fendt Drive
Howell, MI 48843
(517) 548-9096
www.TurboSpray.com

Who we are

Turbo Spray designs and machines true low pressure, specialized atomizers and extensions. We have our own 15,000 square foot manufacturing facility in Howell, Michigan and a sales office in Atlanta, Georgia.

Call us today to see how we can help you improve your paint process control and waste less paint. You are welcome to visit and view the design and machining of your atomizers. We always have complete coating systems on our floor.



**#400
Gun Control
Panel**



**#918
Air piloted
fluid regulator**



**#690
Heated Atomizing
Air unit**

Transfer Efficiency

What is it and what it means to you
What it means to you: Transfer efficiency is the percentage of coating solids from the container that actually ends up on the part being sprayed.

Today's complex painting environment demands 80% transfer efficiency, smaller more energy efficient, flexible painting cells. We must get painting operations under control. Data accumulation and process documentation is important.

Our objectives are

To design and manufacture:

- Low pressure atomizing guns and machining controls
- Similarly matching low pressure fluid controls with high resolution
- PLC control versus manual controls to 5cc/minute with 80% transfer efficiency

www.TurboSpray.com