



CHALDEAN COMMUNITY FOUNDATION

2021 IMPACT

CHALDEAN COMMUNITY FOUNDATION

OUR RESPONSE TO COVID-19

3,225

VACCINES ADMINISTERED

THROUGH A PARTNERSHIP WITH FEMA AND MACOMB COUNTY HEALTH DEPARTMENT

583,000+

PPE ITEMS DISTRIBUTED



PROJECT BISMUTHA

\$147,500

 WORTH OF IN-KIND SERVICES

- 590 PHYSICIAN APPOINTMENTS
- 2,120 PRESCRIPTIONS VALUED IN EXCESS OF \$10,147
- 20,065 OF LAB WORK THANKS TO A GENEROUS GRANT FROM ASCENSION

50,000

INDIVIDUALS SERVED



\$8.7

MILLION RAISED

FOR THE CCF MISSION CAMPAIGN THROUGH COMMUNITY DONATIONS



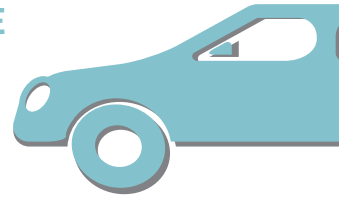
APPROXIMATELY

20%

 OF CLIENTS ARE NON-CHALDEAN

THE MICHAEL J. GEORGE CHALDEAN LOAN FUND

CLOSED THE YEAR WITH MORE THAN \$235,000 IN OUTSTANDING LOANS



EMPLOYMENT

870

JOB PLACEMENT SERVICES CONDUCTED

73%

EMPLOYMENT RATE



EDUCATION

22 SCHOLARSHIPS PROVIDED WORTH APPROXIMATELY

\$60,000

586

STUDENTS WERE ASSISTED WITH FAFSA APPLICATIONS FOR COLLEGE

272

ESL, CITIZENSHIP, AND VOCATIONAL STUDENTS ENROLLED



IMMIGRATION

1,399

IMMIGRATION APPLICATIONS FILED

HELPED 535

NEW AMERICANS BECOME U.S. CITIZENS



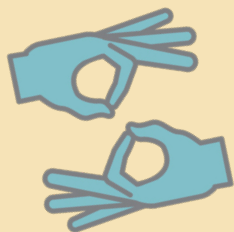
BREAKING BARRIERS

3,083

INDIVIDUALS WITH SPECIAL NEEDS SERVED

3,616 HOURS

OF RESPITE, COUNSELING, AND ADVOCACY SERVICES PROVIDED



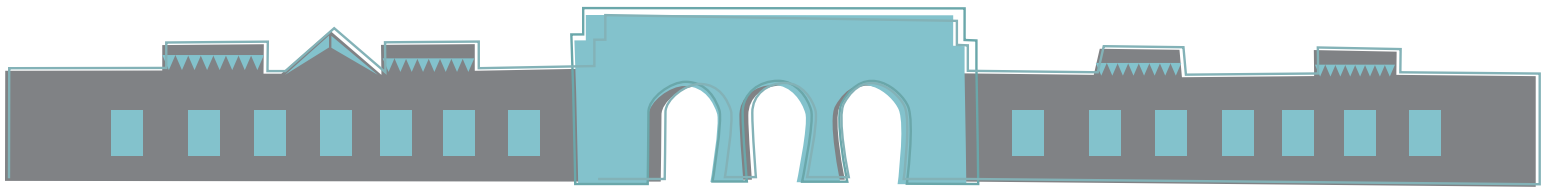
PROJECT LIGHT

LICENSED TRILINGUAL SOCIAL WORKS PROVIDED

1,091

INDIVIDUAL THERAPY SESSIONS VIRTUALLY AND IN-PERSON





MISSION

Improving the stability, health, and wellness of those we serve through advocacy, acculturation, community development, and cultural preservation.

SERVICES

Core programs of the Chaldean Community Foundation include.

NEW AMERICAN ACCULTURATION SUSTAINABILITY & TRAINING

- **IMMIGRATION**— helps individuals apply for lawful permanent resident status and to become naturalized citizens.
- **U.S. NATURALIZATION COURSES**— instruction and preparation for the U.S. Citizenship and Immigration Services (USCIS) naturalization interview.
- **CAREER SERVICES**— provides job search, training and placement.

BEHAVIORAL HEALTH

supplies much-needed mental health services including group, individual, and family therapy based on individual needs to New Americans and others in Southeast Michigan through Project Light.

One of the core initiatives of this program is Breaking Barriers, which provides assistance and advocacy to individuals with special needs and respite to caregivers.

- **BRAILLE ESL ACCULTURATION MOBILITY (B.E.A.M. PROGRAM)**- helps better equip those with visual impairments to live independent lives.
- **HARD OF HEARING, ESL, AMERICAN SIGN LANGUAGE, LIFE SKILLS (H.E.A.L.) PROGRAM**-helps better equip those with hearing impairments to live independent lives.
- **WISE PROGRAM**- an evidence-based wellness program empowering older adults to make positive and healthy choices.

DID YOU KNOW?

*Metro Detroit is home to the largest chaldean community outside the Middle East with an estimated population of **160,000!***

DEPARTMENT OF EDUCATION

- **ENGLISH AS A SECOND LANGUAGE (ESL)** provides individuals English instruction at a basic, beginner and intermediate level.
- **CULTURAL COMPETENCY TRAINING**— provides education and information to greater community, health professionals, and government organizations on and about the Chaldean community.
- **EARLY CHILDHOOD** - infant, toddler, and preschool children ages 0-5 with their parents focused on emergent literacy and engaging parents in language and literacy interaction.
- **GED** - Small group instruction for individuals working to receive their GED.
- **DIGITAL LITERACY** - Computer classes for beginner to intermediate students.
- **WORKFORCE DEVELOPMENT** - Administrative job training, workplace professional skills and communication skills with the opportunity to job shadow for work experience.

THE LIFE SKILLS CENTER

provides space for special needs individuals and their caregivers to have learning opportunities in real life settings to support the advancement of daily living skills, self-determination/interpersonal skill building and employment skill development.

- **THE WIRELESS VISION GYMNASIUM** allows for fitness programs, house community leagues, and offer ample space for community events.
- **THE KONJA FAMILY ART STUDIO** offers space for music, dance and art appreciation and expression.
- **WILD BILL'S CANTINA** supports learning related to developing retail skills, marketing and merchandising.
- **LEVEL ONE BANK** offers space for financial management skill enhancement and knowledge.
- **SUPERCUTS BARBER SHOP** allows for workplace job shadowing and programming focused on personal care.

- **THE ASCENSION PRIMARY HEALTH OUTPATIENT CLINIC** is connected to the Project Light mental health therapy offices allowing for integrated healthcare services for the entire community Contact (586) 738-9475 for information.
- **CLASSROOM SPACE** was created to allow for group learning in a comfortable setting.

AFFILIATES

The Chaldean Community Foundation also administers the following programs, which are funded entirely through community donations.

- **MICHAEL J. GEORGE CHALDEAN LOAN FUND** provides low-interest loans to help New Americans purchase a vehicle.
- **PROJECT BISMUTHA "THE ACT OF HEALING"** provides free or reduced-cost healthcare to Iraqi Christian and Chaldean refugees without medical insurance through the Chaldean American Association for Health Professionals.
- **ACADEMIC AND ENDOWED SCHOLARSHIP PROGRAMS**— provides financial aid assistance for Chaldean students to help meet the escalating cost of education.
- **GIVING HEARTS**— philanthropic Chaldean women's collaboration in memory of the late Vivian Eshshaki Shouneyia. Helps to alleviate the financial duress related to medical care expenses.
- **JOHN LOUSSIA CANCER FUND**— in memory of the late John Loussia, provides financial assistance to those impacted by the high cost of medical expenses.
- **WAAD MURAD ADVOCACY FUND**— advocacy fund that offers a reward for information that leads to the arrest and conviction of the assailant(s) of violent crimes perpetuated against Chaldean businesspeople.



CHALDEAN AMERICAN CHAMBER OF COMMERCE

Chaldean News



CHALDEAN LOAN FUND

